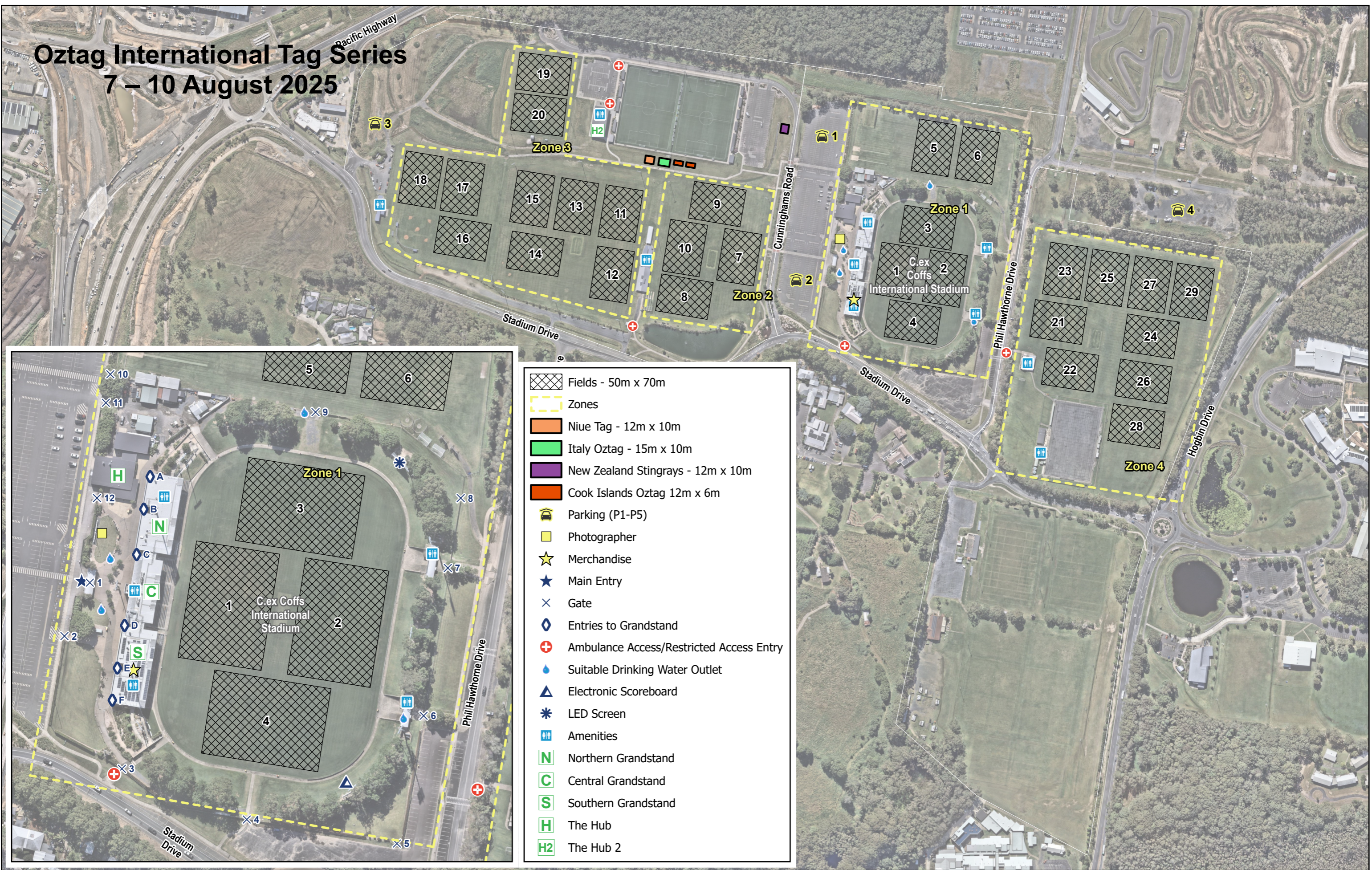


Oztag International Tag Series

7 – 10 August 2025



- Fields - 50m x 70m
- Zones
- Niue Tag - 12m x 10m
- Italy Oztag - 15m x 10m
- New Zealand Stingrays - 12m x 10m
- Cook Islands Oztag 12m x 6m
- Parking (P1-P5)
- Photographer
- Merchandise
- Main Entry
- Gate
- Entries to Grandstand
- Ambulance Access/Restricted Access Entry
- Suitable Drinking Water Outlet
- Electronic Scoreboard
- LED Screen
- Amenities
- Northern Grandstand
- Central Grandstand
- Southern Grandstand
- The Hub
- The Hub 2

Cadastral, topographic and aerial ADS40 information supplied by the NSW Department of Finance and Services and maintained by City of Coffs Harbour (Copyright © 2025, NSW Department of Finance and Services). Other data displayed may have been supplied by various other agencies under licence.

This map must not be reproduced in any form, whole or part, without written permission from City of Coffs Harbour. This City does not warrant the correctness of this map or information contained thereon. This map Copyright © 2025, City of Coffs Harbour.

The City accepts no liability or responsibility in respect to the map and any inaccuracies thereon. Any person relying on this plan shall do so at their own risk.

Oztag International Tag Series

Coffs Coast Sport & Leisure Park

Incorporating C.ex Coffs International Stadium

This map produced by GIS Section
Coffs Harbour City Council
Date: 3/07/2025

SCALE @A3 1:4,500
012.5 50 75 100 125 150
Metres

Coordinate System: GDA 1994 MGA Zone 56
Projection: Transverse Mercator
Datum: GDA 1994

